

# i1Profile Users

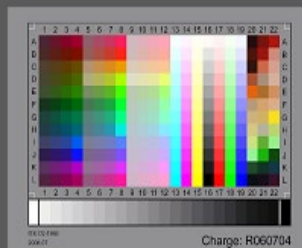
## Select target type and image

Target Type Wolf Faust Reflective



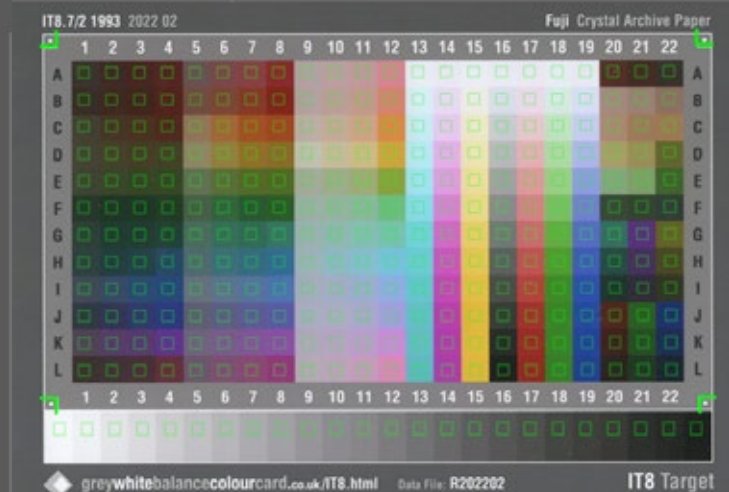
Could not set the crop marks automatically.

Please make sure that the loaded image looks like the one below, and then use the manual crop mark tools to identify the four corner crop marks.



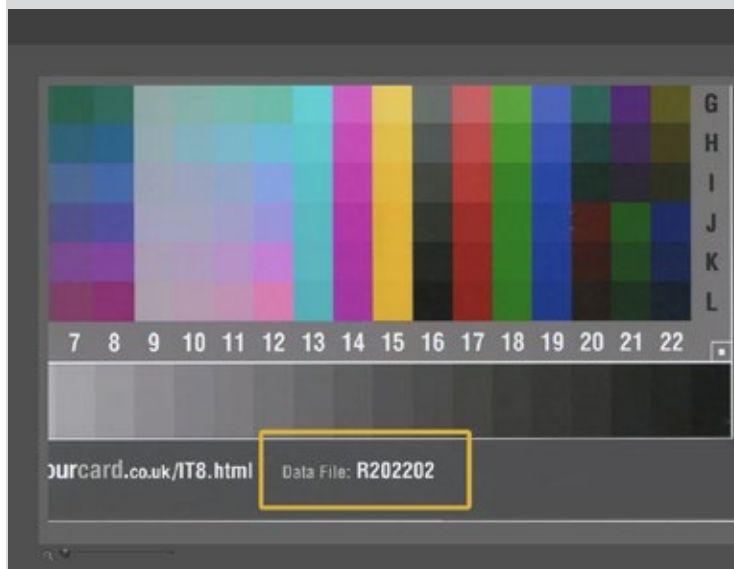
1

2



**i1Profile Users. Please use 'Wolf Faust' when selecting for Reflective and Transmissive profiling.**

- 1 Select 'Wolf Faust' for Target Type.
- 2 Use Manual Crop Marks to locate Target Areas.
- 3 Make a note of the Reference File required.  
The location may change depending on which type you are using.
- 4 Locate the Reference from your Downloads and select Next to finalise the calibration.



3

4

