

The Grey Balance Colour Temperature card

User guide



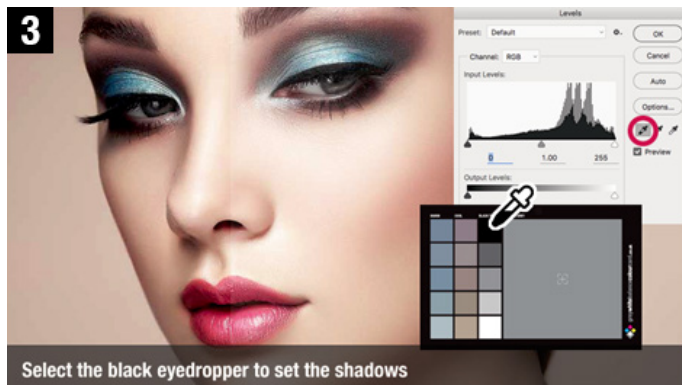
Grey White Balance Colour Temperature card

1 The Grey Balance Colour Temperature card with white and neutral grey on reverse.



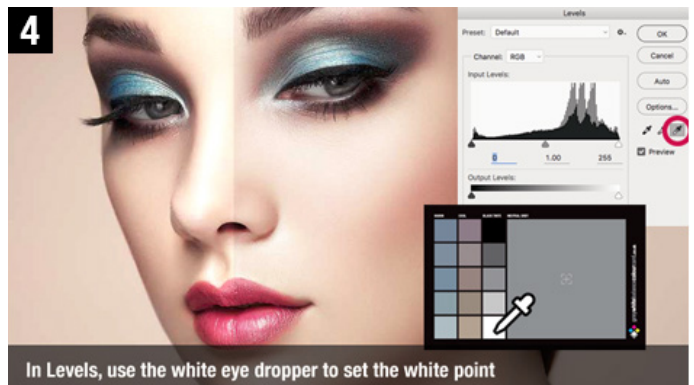
Use the reverse of this card to set a Custom White Balance

2 You can use the reverse of the card to create a custom white balance, or neutral grey/white reference targets for you camera.



Select the black eyedropper to set the shadows

3 In levels, use the white eyedropper to set your desired white point by selecting the white or 10% grey swatch.



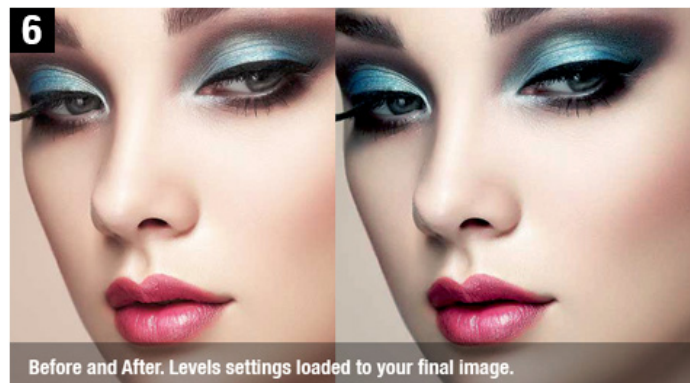
In Levels, use the white eye dropper to set the white point

4 Using the black eyedropper set the black point using the black or rich black swatch.



Set your desired mid-tones. Neutral, Cool or Warm. Save Levels settings.

5 For your mid-tones you have a few options. For a neutrally balance image select the mid grey swatches. You can make your image look warmer or cooler by selecting the swatches from the cool and warm columns. Once you are happy with the overall changes in the white, black and mid-tones, save the level settings. This will be applied later to your images without the Grey White Balance Colour Temperature card.



Before and After. Levels settings loaded to your final image.

6 Open your image without the Grey White Balance Colour Temperature card. Open levels and load the settings you just save. Before and after results